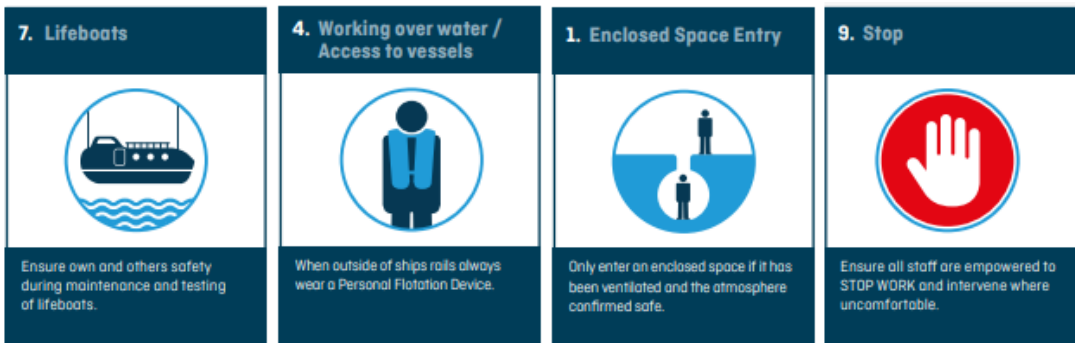


INCIDENT PREVENTION: LIFEBOATS

Together in Safety Golden Safety Rules:

Apply Together in Safety [Golden Safety Rules](#)



Additional guidelines and best practices:

Ensure weekly, monthly, annual, and 5-year maintenance and inspection routines are conducted in accordance with manufacturer's instructions and SOLAS III/20 (Operational readiness, maintenance, and inspections).

See [DNV GL Class Guideline: Maintenance of safety equipment \(DNVGL-CG-0058\)](#).

See [Lloyd's Register & UK P&I Club pocket checklist – Life-Saving Appliances](#).

Check the integrity of structural connections in the weekly/monthly inspections. Report any defects and temporary repairs to Class and Flag.

Consider additional safety measures such as Fall Preventer Devices.

See [UK Maritime and Coastguard video](#).



saf45%20-%20use%
20of%20fpd%20in%2

See example [checklist for use of lifeboat fall prevention device \(FPD\)](#).

Training:

Train crew in their abandon ship and rescue boat responsibilities. The time limits set out in SOLAS for ship abandonment should be considered as a secondary objective when conducting drills. Drills must be conducted safely.



See [Witherbys Lifeboat launch and recovery checklist](#).

Supervise lifeboat exercises with experienced officers

Hold a debrief after each drill and reflect on what went well, and what needs improvement.

Learn from industry case studies:

See [UK P&I Club animation Lessons Learnt: Death of a Bosun](#)

Supplement practical training with Learning Engagement Tools. <https://hsse.shell.com/business/maritime-hsse-site/learning-engagement-tool.html>

INCIDENT PREVENTION: LIFEBOATS

Verification:

Establish, implement, and audit HSE procedures covering the maintenance and operation of lifeboats and their launching appliances. Ref. ISM Code 7, and ISM Code 10. This includes risk assessment. Ref. ISM Code 1.2.2.

Hold an abandon ship drill at each Superintendent visit to verify crew readiness and safe working practices.